

# Year 3 and 4 Home Learning

## Science Week 11

This half term we will be reviewing topics that we have done this year. First we will look at 'Light'

All do Bronze

### Sources of light

Cut out and place the images at the bottom of the page into either non-light source or light source.

<i>Non-light source</i>	<i>Light source</i>



## Do Silver if you are up for the Challenge

Can you explain whether each of these children is correct or not? Remember to provide scientific reasoning to support your answers.



I think a window is a source of light.



---

---

---

---



I think a solar light is not a source of light because it gets light from the sun to charge.



---

---

---

---



The moon is a source of light because it brightens the night sky.



---

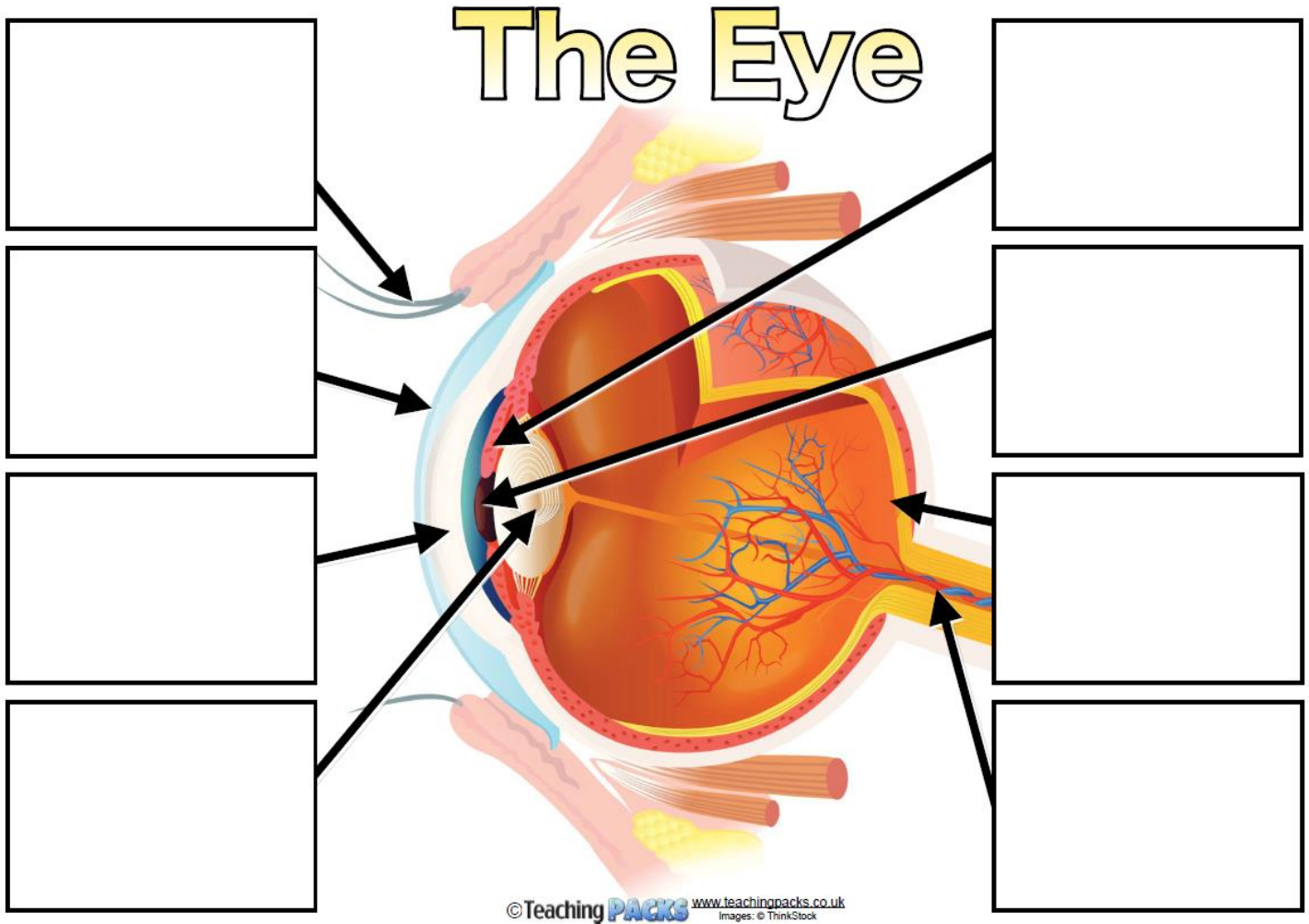
---

---

---

## Gold - Challenge 2!

First - do you know any of the labels for the eye? Don't worry if you don't. You can learn them during this activity.



Iris

Cornea

Pupil

Lens

Optic Nerve

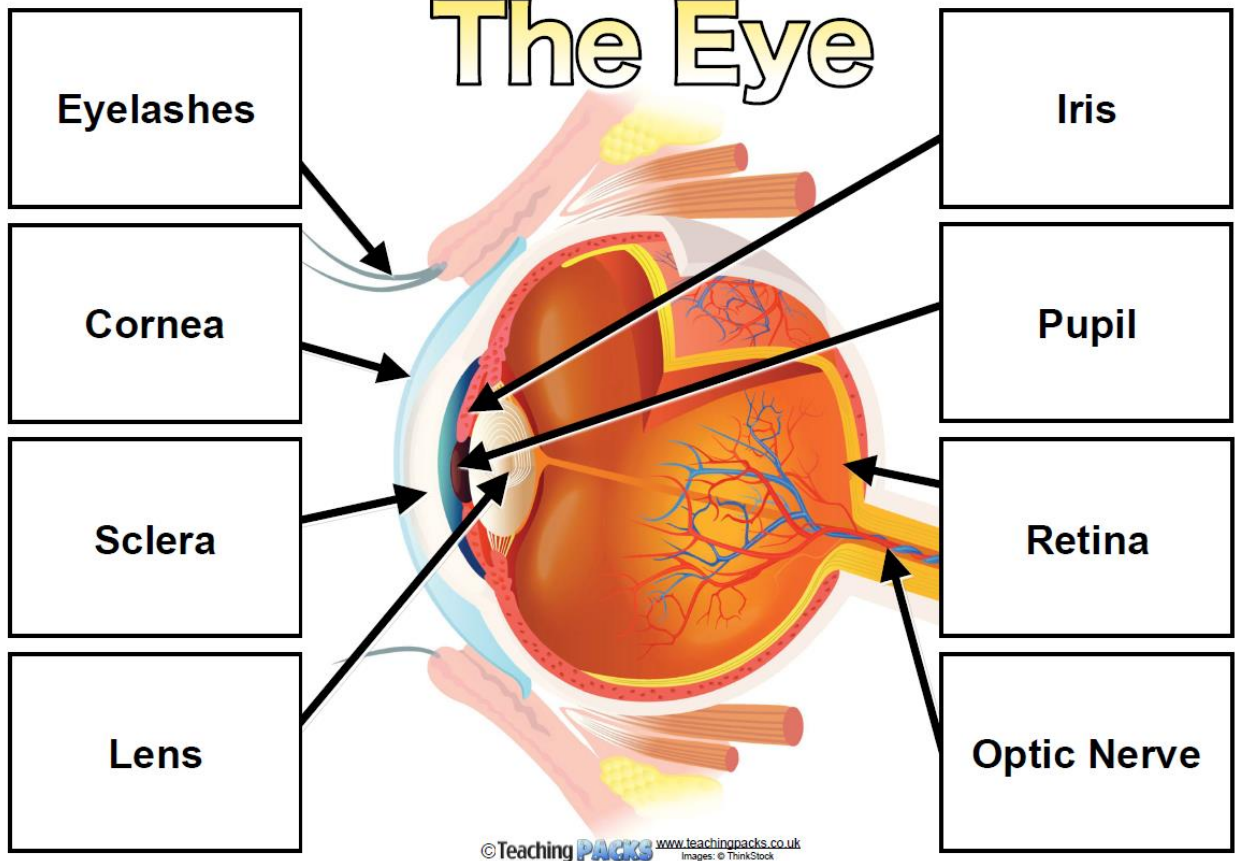
Eyelashes

Sclera

Retina

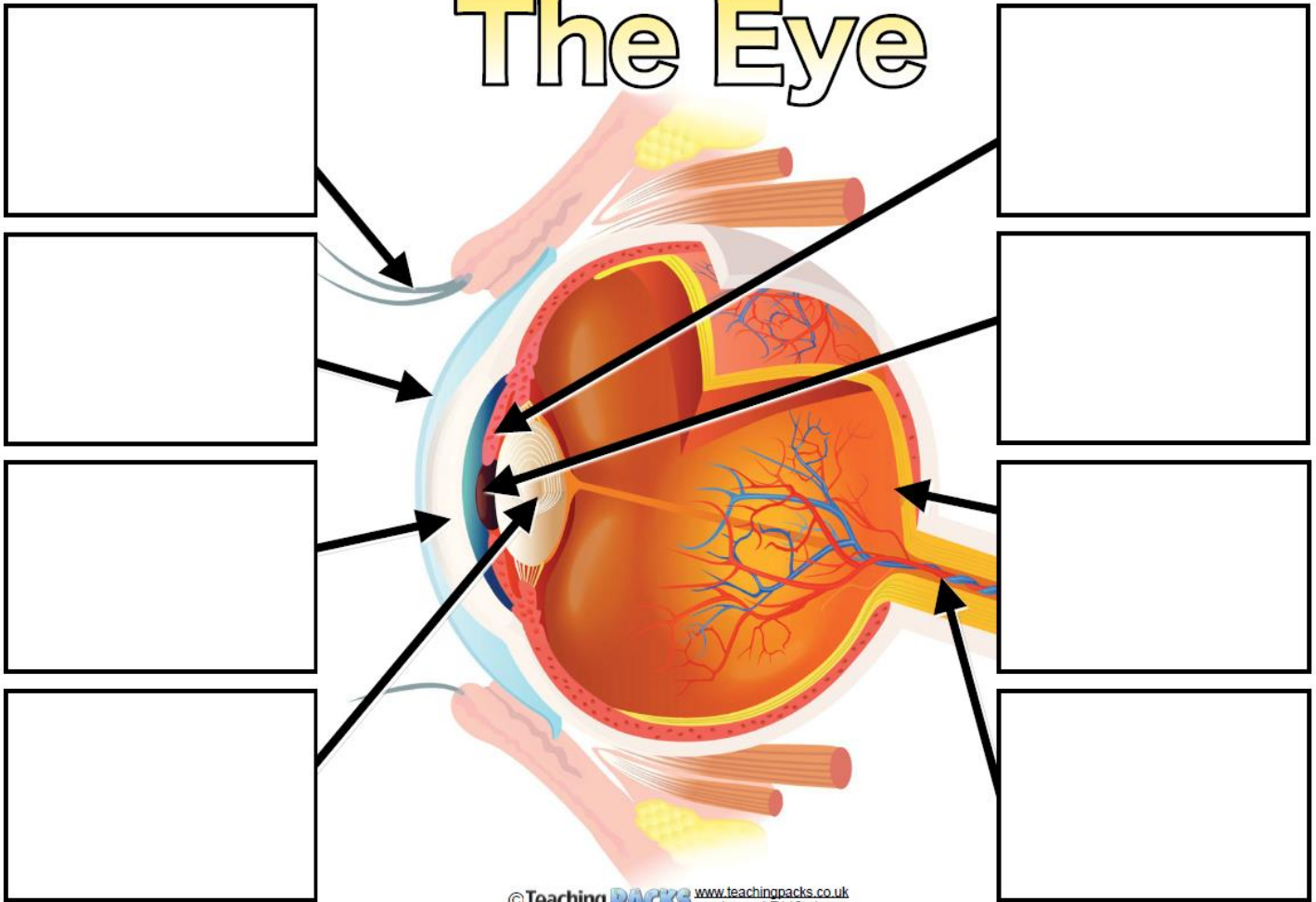
On the next page are the answers. See if you can learn them. Remember where they are.

# The Eye



**Anyone up for Challenge 3?? Please go onto the next page.**

# The Eye



©Teaching PACKS [www.teachingpacks.co.uk](http://www.teachingpacks.co.uk)  
Images: © ThinkStock

**Iris**

The iris is the coloured part of the eye that surrounds the pupil. Muscles in the iris allow it to open and close up, to control the amount of light entering the eye.

**Cornea**

The clear skin at the front of the eye.

**Pupil**

The pupil is the hole that allows light into the eye.

**Lens**

The lens changes shape to focus light onto the retina.

**Optic Nerve**

This carries nerve impulses to the brain from the back of the retina.

**Eyelashes and Eyebrow**

Eyelashes and eyebrows stop dust and sweat from getting into the eyes and irritating them.

**Sclera**

The tough, outer white part of the eye.

**Retina**

A layer of light sensitive tissue. It contains cells called rods and cones. Rods work best in dim light and see in black and white. Cones work best in bright conditions and give colour vision.

**On the next page are the answers. See if you can learn them. Remember where they are.**

# The Eye

## Eyelashes and Eyebrow

Eyelashes and eyebrows stop dust and sweat from getting into the eyes and irritating them.

## Cornea

The clear skin at the front of the eye.

## Sclera

The tough, outer white part of the eye.

## Lens

The lens changes shape to focus light onto the retina.

## Iris

The iris is the coloured part of the eye that surrounds the pupil. Muscles in the iris allow it to open and close up, to control the amount of light entering the eye.

## Pupil

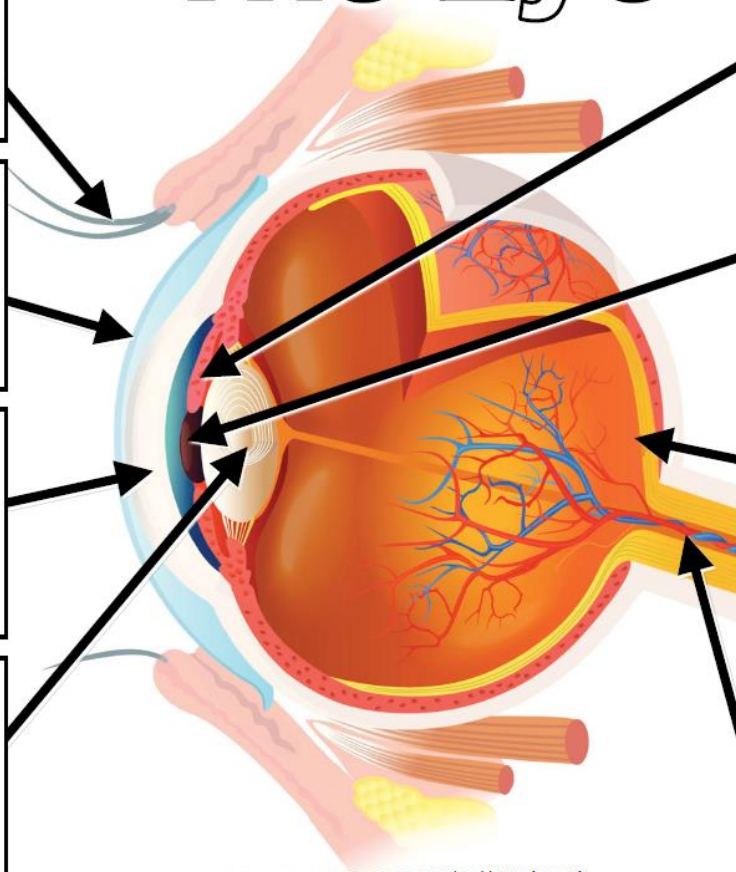
The pupil is the hole that allows light into the eye.

## Retina

A layer of light sensitive tissue. It contains cells called rods and cones. Rods work best in dim light and see in black and white. Cones work best in bright conditions and give colour vision.





## Optic Nerve

This carries nerve impulses to the brain from the back of the retina.



# Sources of light (Answers)

In some questions, alternative answers maybe acceptable. The likeliest answers are given below. If questions have more than one answer, teachers should use their own judgement when marking.

<i>Non-light source</i>	<i>Light source</i>
	
	
	



I think a window is a source of light.



**Not a source of light as it doesn't make its own source of light.  
Allows light to easily pass through it from sources of light.**



I think a solar light is not a source of light because it gets light from the sun to charge.



**A solar light is a source of light. It has its own light source in the form of bulbs or light emitters. Despite the fact it stores energy collected from the sun, it is still able to produce its own light.**



The moon is a source of light because it brightens the night sky.



**The moon appears bright because it is such a large object in the sky. It reflects light from the sun which appears to make the moon look as if it is its own light source.**