

Match the mask to the place:

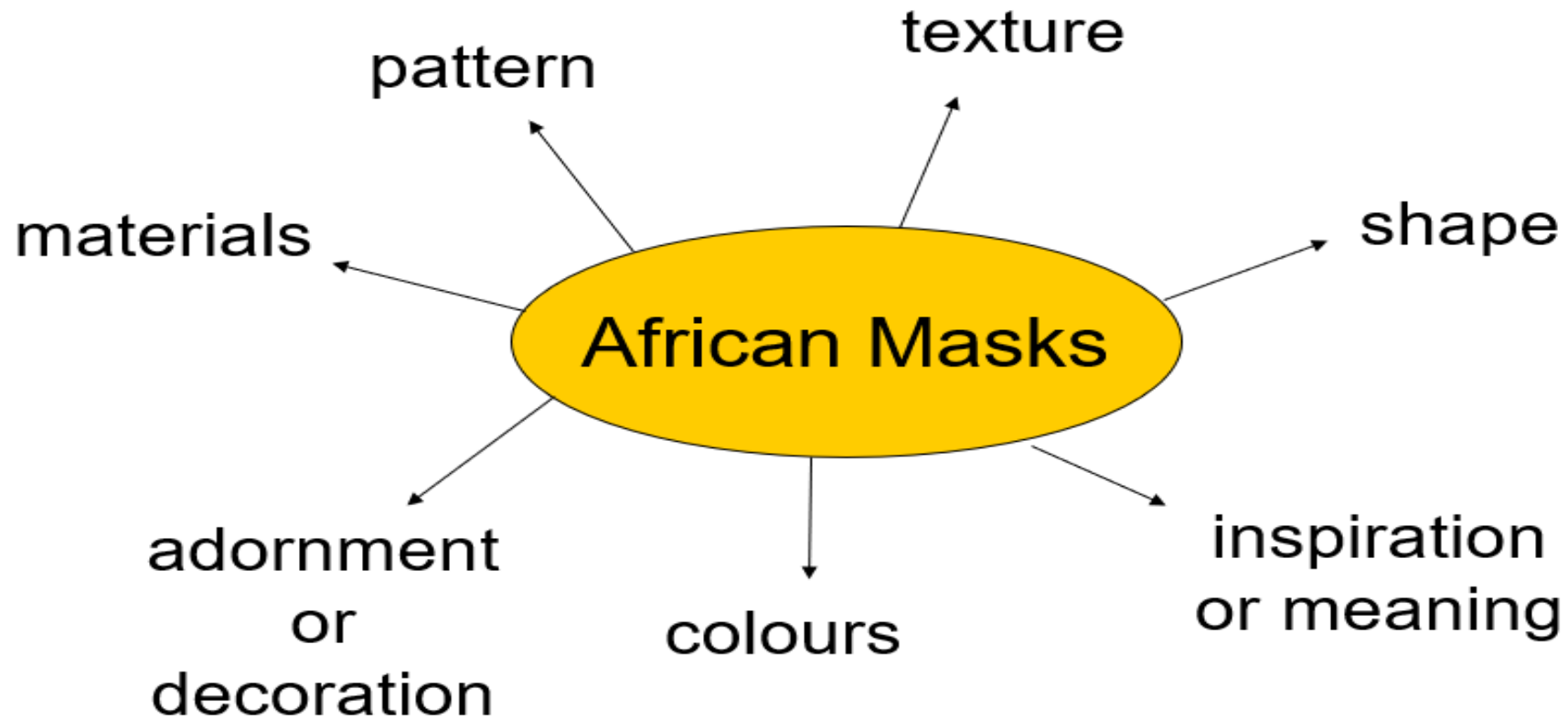
NEW ZEALAND - AFRICA - BRAZIL - INDONESIA - EGYPT - CHINA



AFRICAN MASKS



Key Characteristics of African Masks



Shapes and their meanings

Masks come in all sorts of shapes and proportions. These have hidden meanings: eyes wide shut and lines near the mouth represent tranquillity, masks with small eyes and mouths represent humility and humbleness, a bulging forehead represents wisdom.

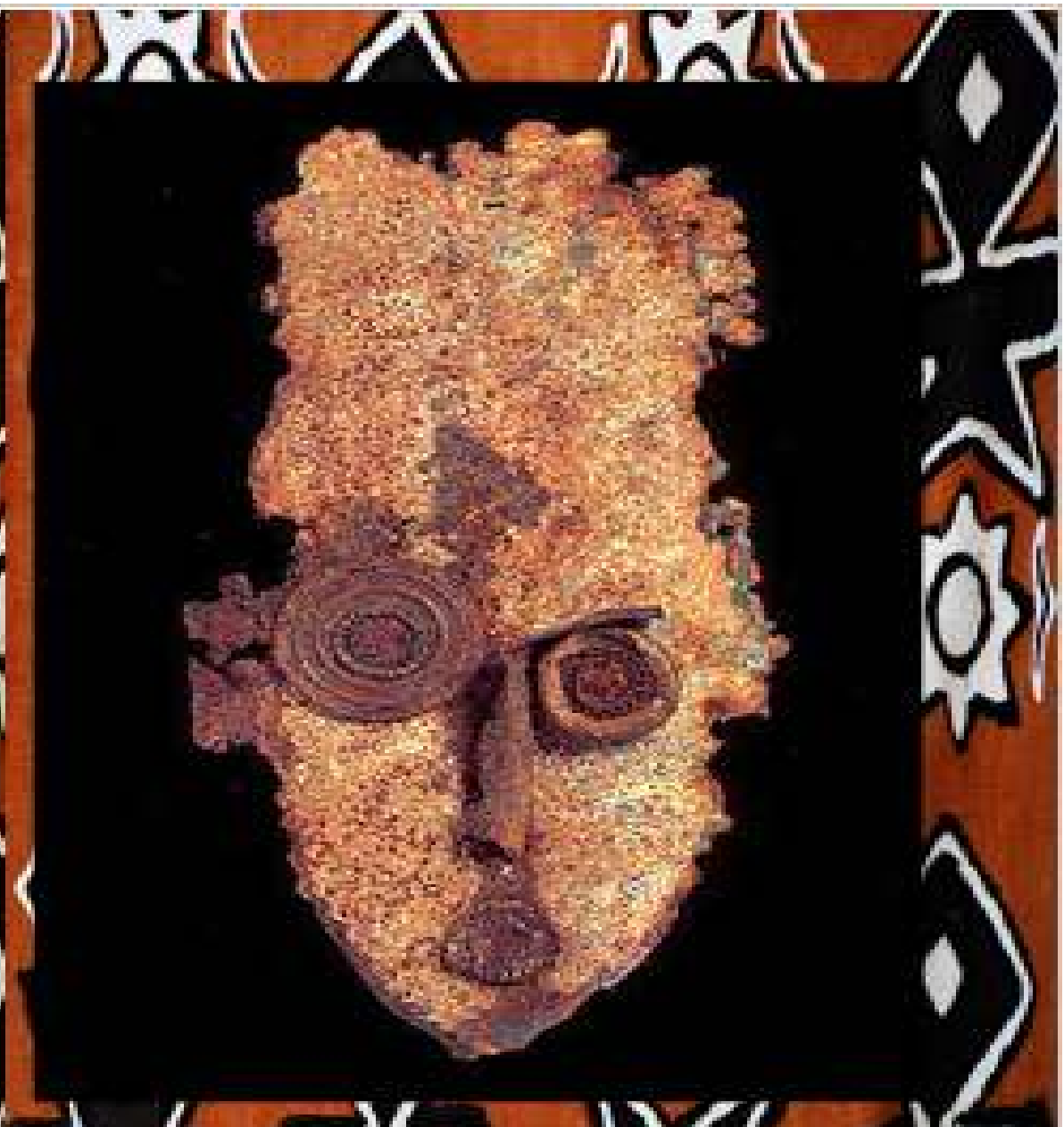
Other masks that have exaggerated long faces and broad foreheads symbolize power. War masks are also popular.

Some tribes carve masks with round eyes to represent alertness and anger.

Some ideas for different shapes....







African symbols



African patterns

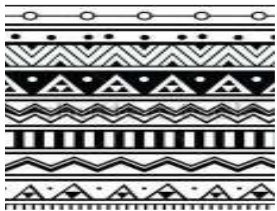


LO: To design an African mask.

- Make sure you include some African inspired patterns/symbols
- You can use one of the following templates to help with the shape of your mask or create your own shape.
- You can use any medium – a pencil drawing (shading), paint, felt tips, pastels or you can try to make a 3D mask.

Create an African Mask

1. In the templates provided add you own patterns
2. Use a black pen
3. Make your design symmetrical

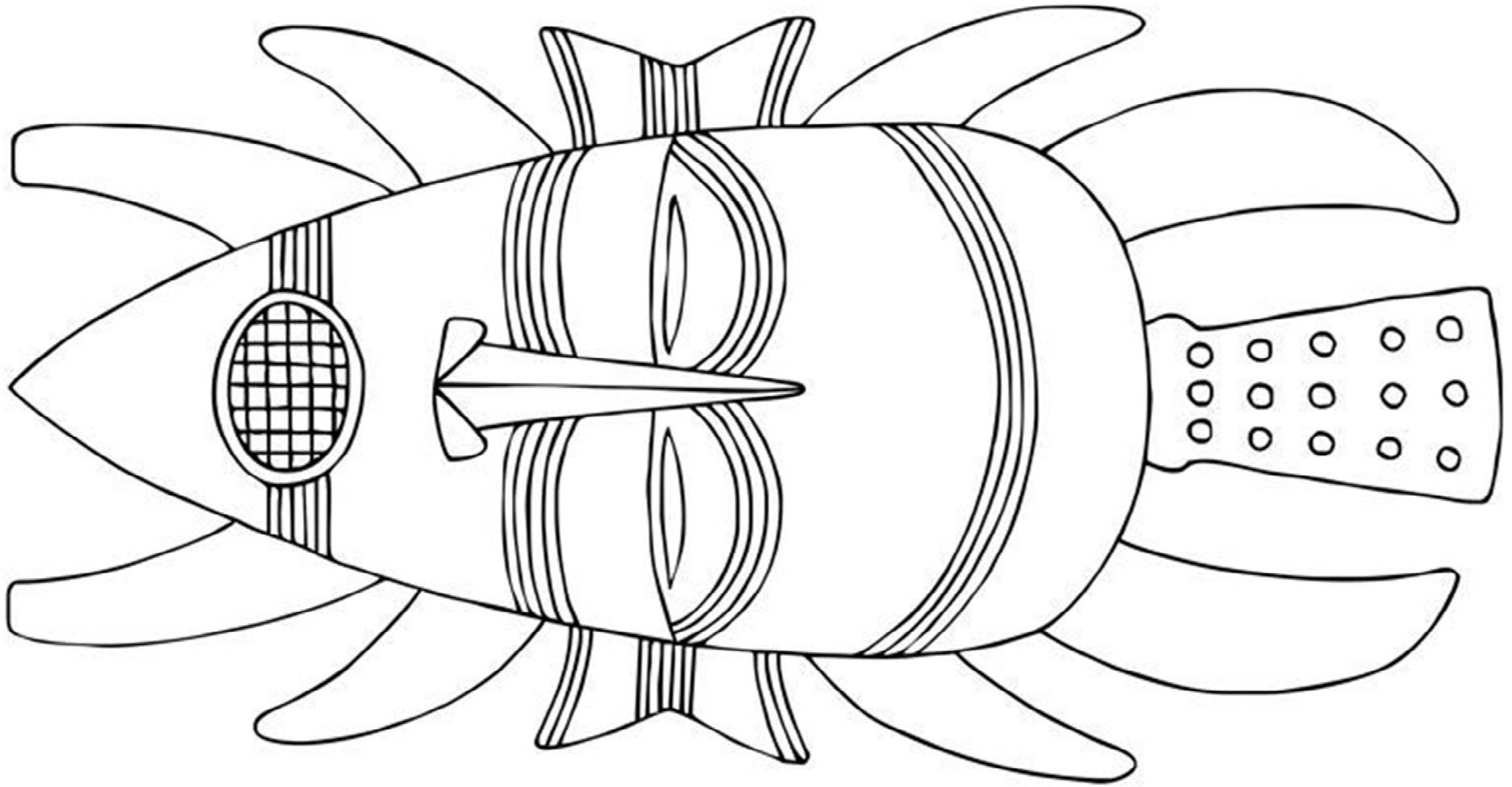


Add your patterns here:



Your name:

Draw from either your own mask or one of these:



Use these resources to print out for students to trace, or to add pattern to them

