

LO: To use ratios in different contexts

You are going to design your own theme park and you have £28,000 to spend on your theme park.

The ratio of money you spend on rides, refreshments and appearance must be 4:2:1. How much will you need to spend on each?

The price lists are below. Decide what you will spend your money on.

You can buy more than one of each item if you wish.

You must choose things that will make your park popular.

You must spend **all** of the money.

Show your working in your book, including price lists and total costs.

Rides

The Twirly Whirly £5000



The Twirly Whirly is the twirliest, whirliest ride you'll ever have. Upside down and round and round!



Ghostly Ghoster Coaster £1500

This terrifying track will scare the wits out of your unsuspecting customers. Every ride is different and the Ghoster Coaster is full of unpleasant surprises.

Fizzy Whizzer £200

Your customers will whoop as they whiz down the helter skelter.



Bumper Cars £500

Watch your customers bump around in these fun fairground classics.



Kiddy Koaster

£300

The only safe way for children under five to enjoy the fun of the rides.



Highroller £10,000

Would you dare to ride the highest, exhilarating rollercoaster in existence?



most



Whoosing Waltzer £3000

This super waltzer ride will leave your head spinning

Pirate Party £1000

All aboard the pirate party ship! This fun ride plays music and the sounds of a pirate party: a fun addition to any good theme park.



Fairground Ferris Wheel £500

This classic fairground favourite will be a hit.



Circus Carousel £500

This beautiful antique carousel is still in full working order.

Super Swing Seats £1000

These swings might be pricey, but they're worth it!



Terror Trail £5000

It's terrifying but your customers will want to go on it again and again!

Refreshments

Hot Dogs £100

These portable stalls can be wheeled around the fairground easily.



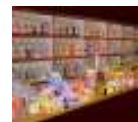
McDonalds £4000

The well known favourite burger restaurant. Pricey but popular!



Sweet Shop £200

All the children's favourite sweets.



Healthy Salad Bar £300

For the health conscious customer.



Coffee Shop £500

Complete with a crèche for children.



Appearance

Plants £100



Fountains £500



Street Performers £100



Trees £300

Optional Challenge – can you draw a scale plan of your theme park.